

## Broad Portfolio of Chemistry Reagents

In collaboration with DiaSys, Sysmex offers a comprehensive range of high quality chemistry reagents for the BX-4000. Tests available include cardiac profile, lipid profile, renal profile, diabetes profile and liver profile.

DiaSys Diagnostic Systems has been a leading specialist in the development and manufacturing of diagnostic system solutions for over 20 years.

### Benefits of DiaSys Reagents:

- Stable, ready-to-use liquid reagents
- Long on-board stability and calibration stability
- Minimised interferences with lipid clearing system
- Standardised to international reference material/methods
- Barcoded reagents with multi-calibrator and control for easy handling



## Specifications

<b>Throughput (test/hr)</b>		560
		400 (w/o ISE)
<b>Parameters (simultaneous analysis)</b>		60 + 3 (with ISE)
<b>Reagent</b>	Position	60
	Volume	20 µL – 350 µL
	Barcode Reader	Yes
<b>Sample</b>	Position	92 (72 tube-holders, 20 cup-holders)
	Volume	2 µL – 35 µL (photometric assay) 60 µL (ISE)
	Level Detection	Yes
	Clot Detection	Yes
	Barcode Reader	Yes
<b>Reaction unit</b>	Incubation bath	Dry bath
	No. of cuvette	90
	Cuvette type	Semi-permanent glass (Pyrex)
	Reaction volume (total)	150 µL – 450 µL
	Mixing	metallic stirrer with 5-speed levels
<b>System</b>	Optical measurement	12 wavelengths (340, 380, 415, 450, 510, 546, 570, 600, 660, 700, 750, 800nm)
	PC Operating System	Windows 7
	Host Interface	RS232C
	Results Storage	1,000,000 tests
	Water consumption	18 Litres/hour
	Dimension (WxDxH)mm	970 X 690 X 582
Weight (kg)	150	

## Automated Chemistry Analyser BX-4000

Performance  
You Can Trust.



Design and specifications may be subject to change due to further product development.

Registered under Act 737  
Registration No:  
IVD17482331117A

**Sysmex Asia Pacific Pte Ltd**  
Tel +65 6221-3629 Fax +65 6221-3687  
[www.sysmex-ap.com](http://www.sysmex-ap.com)

**Sysmex India Pvt. Ltd**  
Tel +91 (22) 6112-6666  
[www.sysmex.co.in](http://www.sysmex.co.in)

**PT Sysmex Indonesia**  
Tel +62 (21) 3002-6688 Fax +62 (21) 3002-6699  
[www.sysmex.co.id](http://www.sysmex.co.id)

**Sysmex (Malaysia) Sdn Bhd**  
Tel +60 (3) 5637-1788 Fax +60 (3) 5637-1688  
[www.sysmex.com.my](http://www.sysmex.com.my)

**Sysmex New Zealand Ltd**  
Tel +64 (9) 630-3554  
[www.sysmex.co.nz](http://www.sysmex.co.nz)

**Sysmex (Thailand) Co., Ltd**  
Tel +66 (2) 032-2536 Fax +66 (2) 116-5396  
[www.sysmex.co.th](http://www.sysmex.co.th)

**Sysmex Philippines Inc.**  
Tel +63 (2) 621-2460 Fax +63 (2) 621-2432  
[www.sysmex.com.ph](http://www.sysmex.com.ph)

**Sysmex Vietnam Co., Ltd**  
Tel +84 (8) 3997-9400 Fax +84 (8) 3997-9405  
[www.sysmex.com.vn](http://www.sysmex.com.vn)

**Sysmex Vietnam Co., Ltd (Hanoi Branch)**  
Tel +84 (4) 3776-7020 Fax +84 (4) 3776-7022  
[www.sysmex.com.vn](http://www.sysmex.com.vn)

**Sysmex Australia Pty Ltd**  
Tel +61 (2) 9016-3040  
[www.sysmex.com.au](http://www.sysmex.com.au)



# High Performance Compact Solution for your Chemistry Testing

The BX-4000 is an automated chemistry analyser designed specially for mid-volume laboratories which demand high productivity and require a compact size.

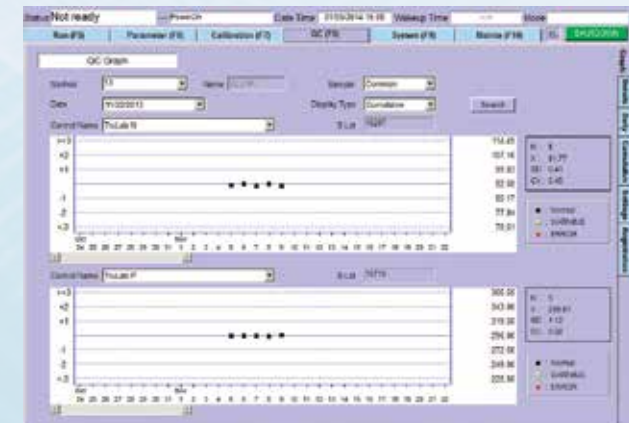
Offering a throughput of up to 560 tests per hour, it is one of the fastest analysers in its class. The advanced technology it employs allows the BX-4000 to deliver accurate results with high efficiency and user friendly operation with low running cost.

### Accurate Results

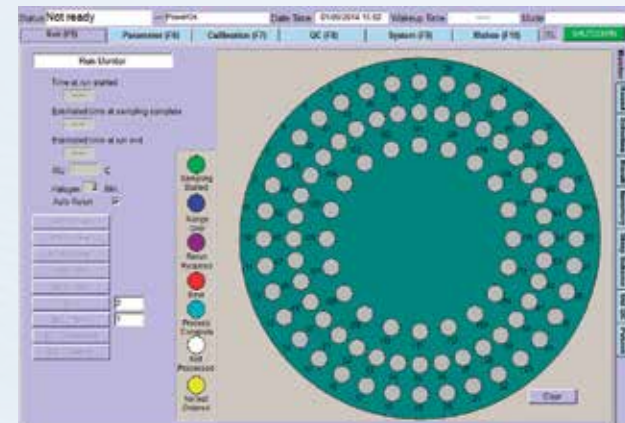
- Clot detection system and serum indices testing assure sample integrity.
- Sample barcode reader ensures positive sample identification.
- Cooled reagent compartment (8°C to 15 °C) maintains quality of reagent.
- Comprehensive QC program helps laboratory to monitor analyser performance.

### User Friendly Operation

- Smart menu-based software makes the sophisticated functions of the analyser easy to understand.
- Real-time results status detailing the time to completion of test helps in time management.



QC Screen



Monitoring screen

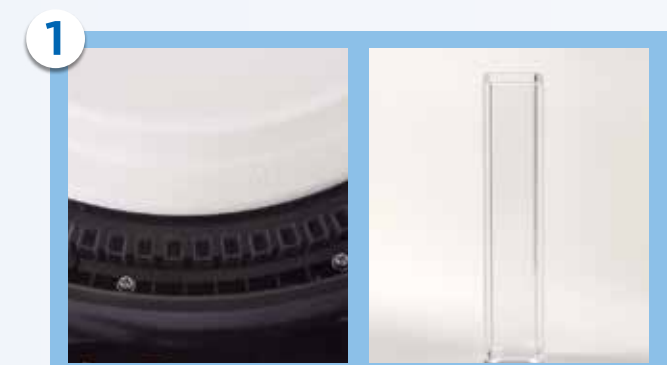
### Increased Efficiency

- Automated start-up and before sleep operation maximises technologists on-site working hours.
- Automated on-board sample dilution, re-run & reflex testing functions realise walk away operation.
- Reagent barcode reader allows random loading of reagents.
- STAT Lid ensures urgent samples can be loaded and analysed right away.

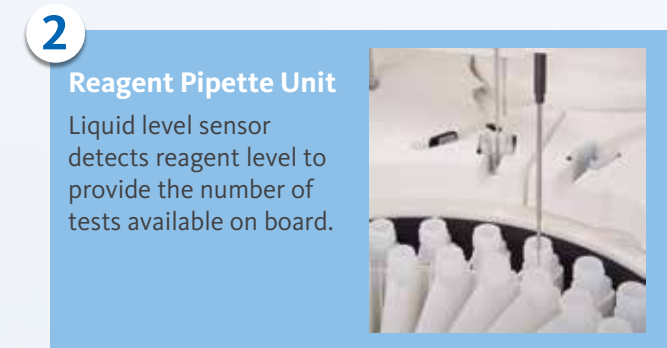
### Low Running Cost

- Dry incubation bath minimises maintenance
- Hard glass cuvette reduces replacement cost
- Low detergent consumption needed for cleaning

## Features of BX-4000



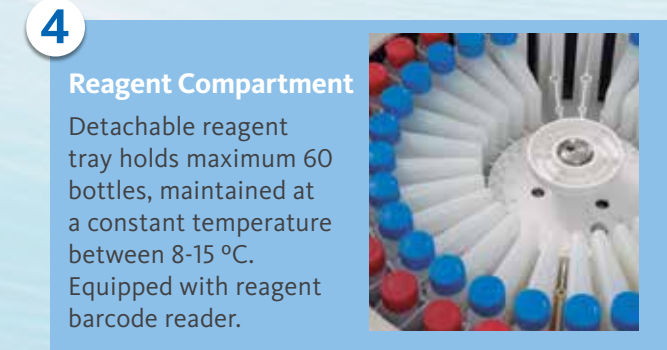
**1 Incubation Reaction Unit**  
90 cuvettes - semi-permanent glass type, incubate in a dry bath for test reaction to take place.



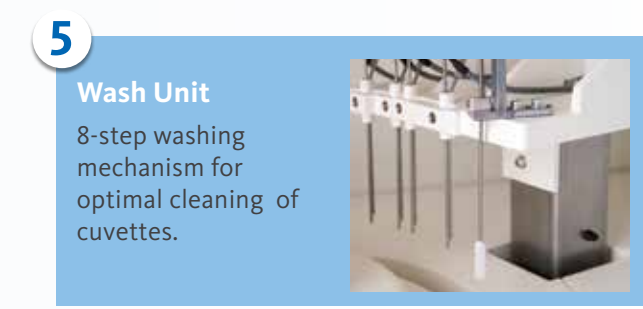
**2 Reagent Pipette Unit**  
Liquid level sensor detects reagent level to provide the number of tests available on board.



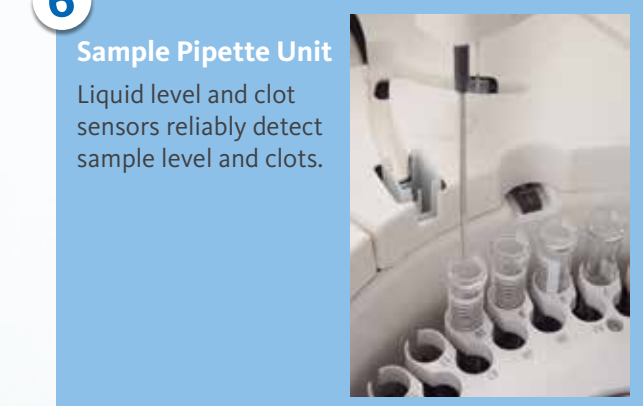
**3 Stirrer Unit**  
2 metallic stirrers with 5 mixing speeds allow proper mixing of sample & reagent within the cuvette.



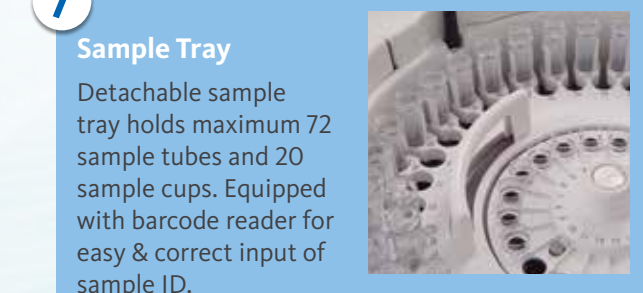
**4 Reagent Compartment**  
Detachable reagent tray holds maximum 60 bottles, maintained at a constant temperature between 8-15 °C. Equipped with reagent barcode reader.



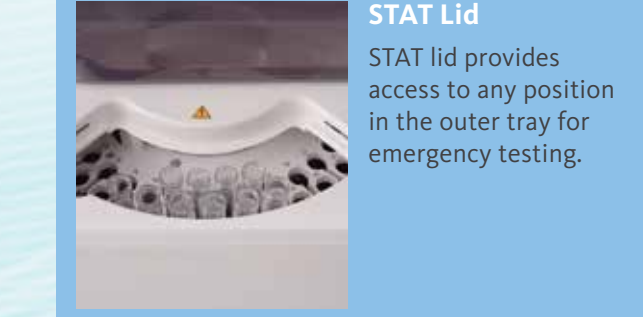
**5 Wash Unit**  
8-step washing mechanism for optimal cleaning of cuvettes.



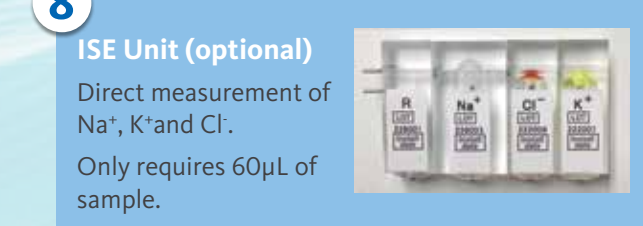
**6 Sample Pipette Unit**  
Liquid level and clot sensors reliably detect sample level and clots.



**7 Sample Tray**  
Detachable sample tray holds maximum 72 sample tubes and 20 sample cups. Equipped with barcode reader for easy & correct input of sample ID.



**STAT Lid**  
STAT lid provides access to any position in the outer tray for emergency testing.



**8 ISE Unit (optional)**  
Direct measurement of Na<sup>+</sup>, K<sup>+</sup> and Cl<sup>-</sup>. Only requires 60µL of sample.